

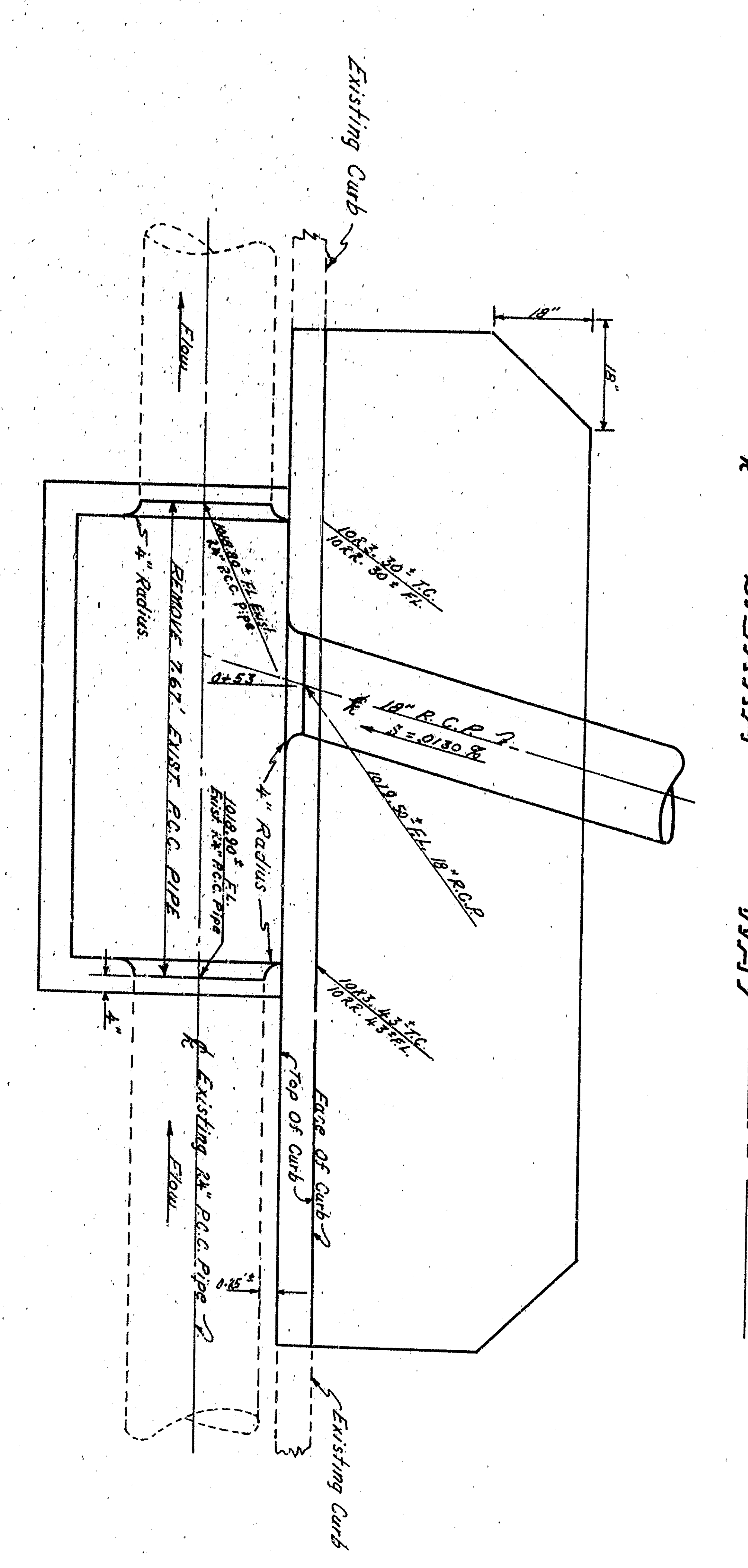
BENCH MARK:
Screw In N.W. Corner Fourth Street
And Sierra Way, Elev. 1023.57 M.S.L.

NOTE:
The contractor's operation shall be so regulated as not to interfere with the operations of trains, or cause damage to railway facilities. No excavated or other material, tools, or equipment to be placed within eight feet (8') of the outside rail of the tracks.
Twenty-four hours advance notice of the installation to be given in order that the representative of the S.P. Co. may be present at the time of the installation. Please call Contract Section Madison 4-6161, Ext. 22531.

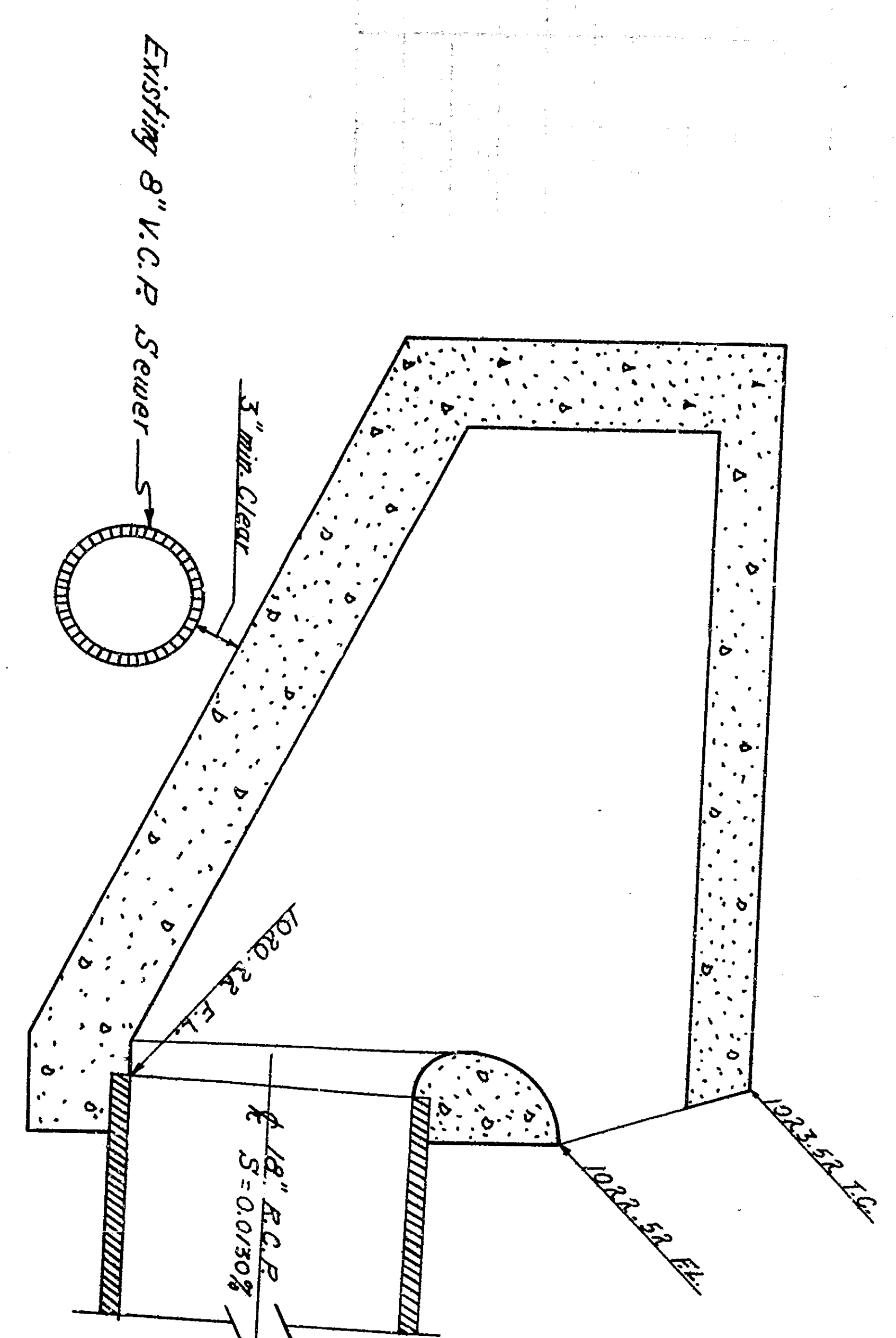
PROFILE
Scale: Horiz. 1" = 20'
Vert. 1" = 2'

GENERAL NOTES

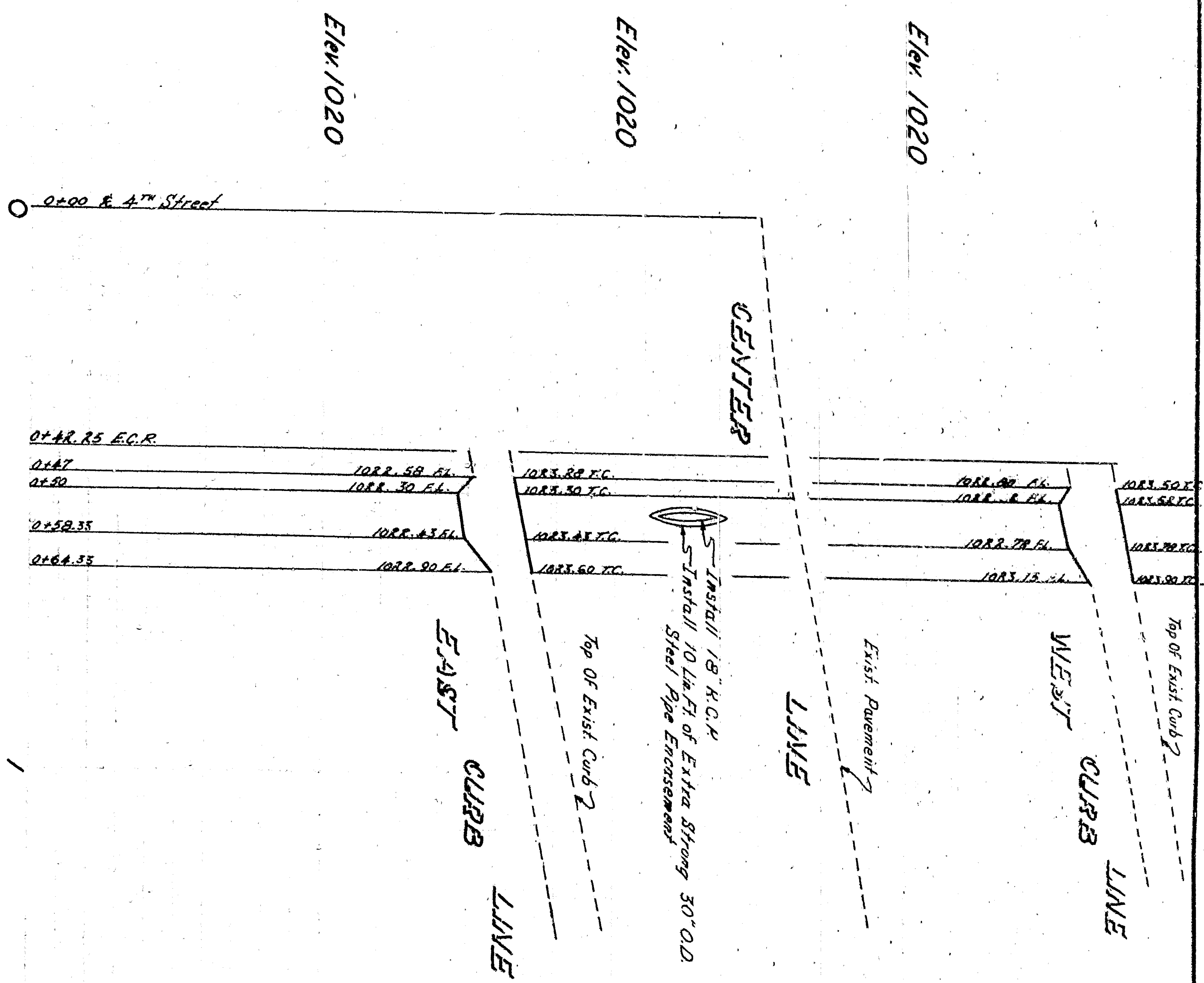
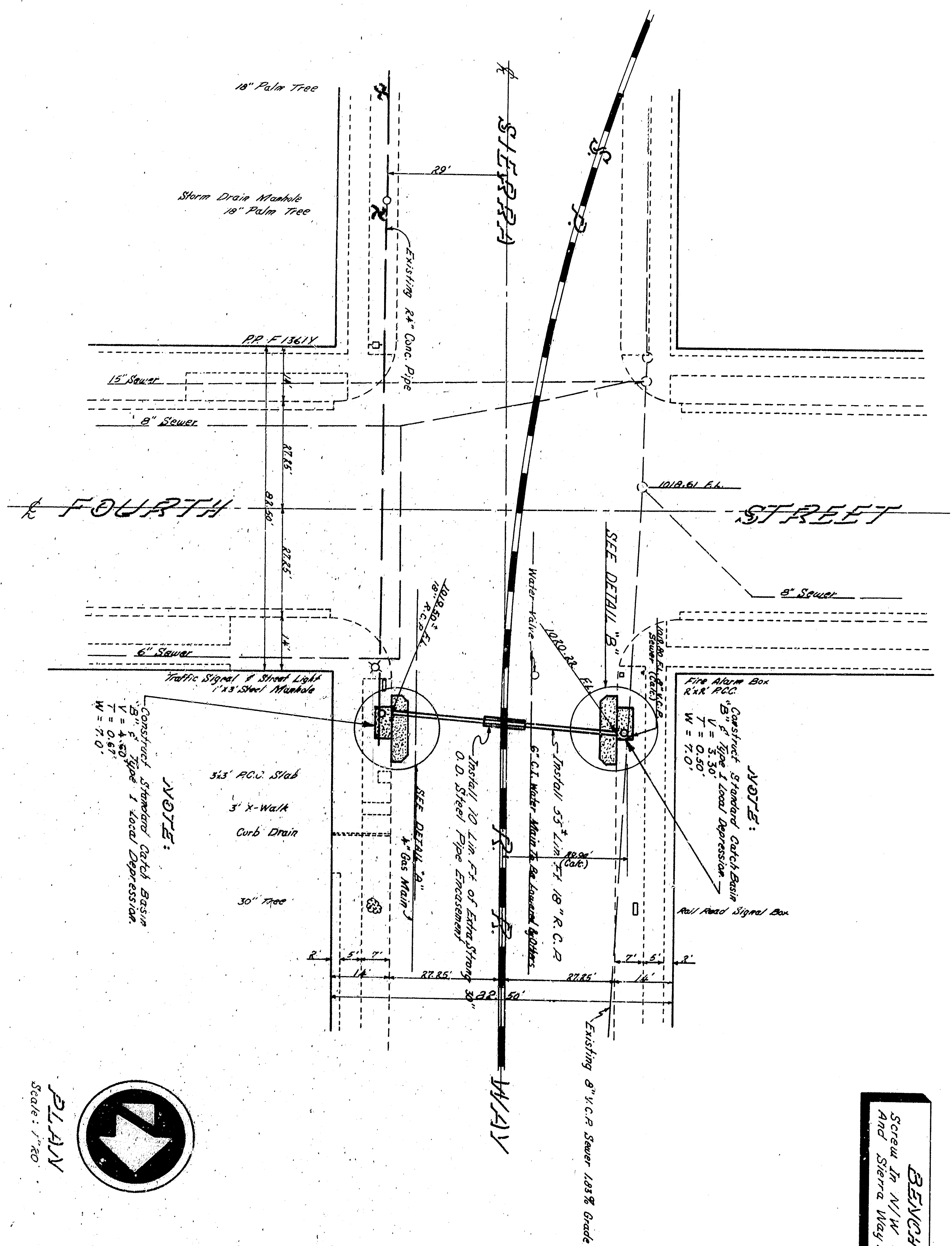
1. All work performed on this plan shall be done in conformity with applicable provisions of Standard Specifications, State of California, Highway Transportation Department, and special provisions in S&S21 (Highways), Dated July 1965, and special provisions in S&S21 (Highways), Dated 1965.
2. Adjust all Sewer Manholes to grade after completion of paving.
3. Obstructions (markings on plan) as directed by Engineer to be removed or relocated under his contract.
4. To be removed or relocated by others.



DETAIL "B"
Scale: 1" = 1'



| | | |
|---|------------------|------|
| APPROVED: | DATE: | 1964 |
| CITY ENGINEER | | |
| REGISTERED CIVIL ENGINEER NO. 12643 | | |
| DRAWING NO. 3321 | DRAWN BY: Kurrel | |
| CHECKED BY: 2/2/64 | | |
| SHEET 1 OF 4 SHEETS RECOMMENDED | | |
| DEPARTMENT OF ENGINEERING CITY OF SAN BERNARDINO | | |
| IMPROVEMENT PLANS | | |
| SIERRA WAY AT FOURTH STREET | | |



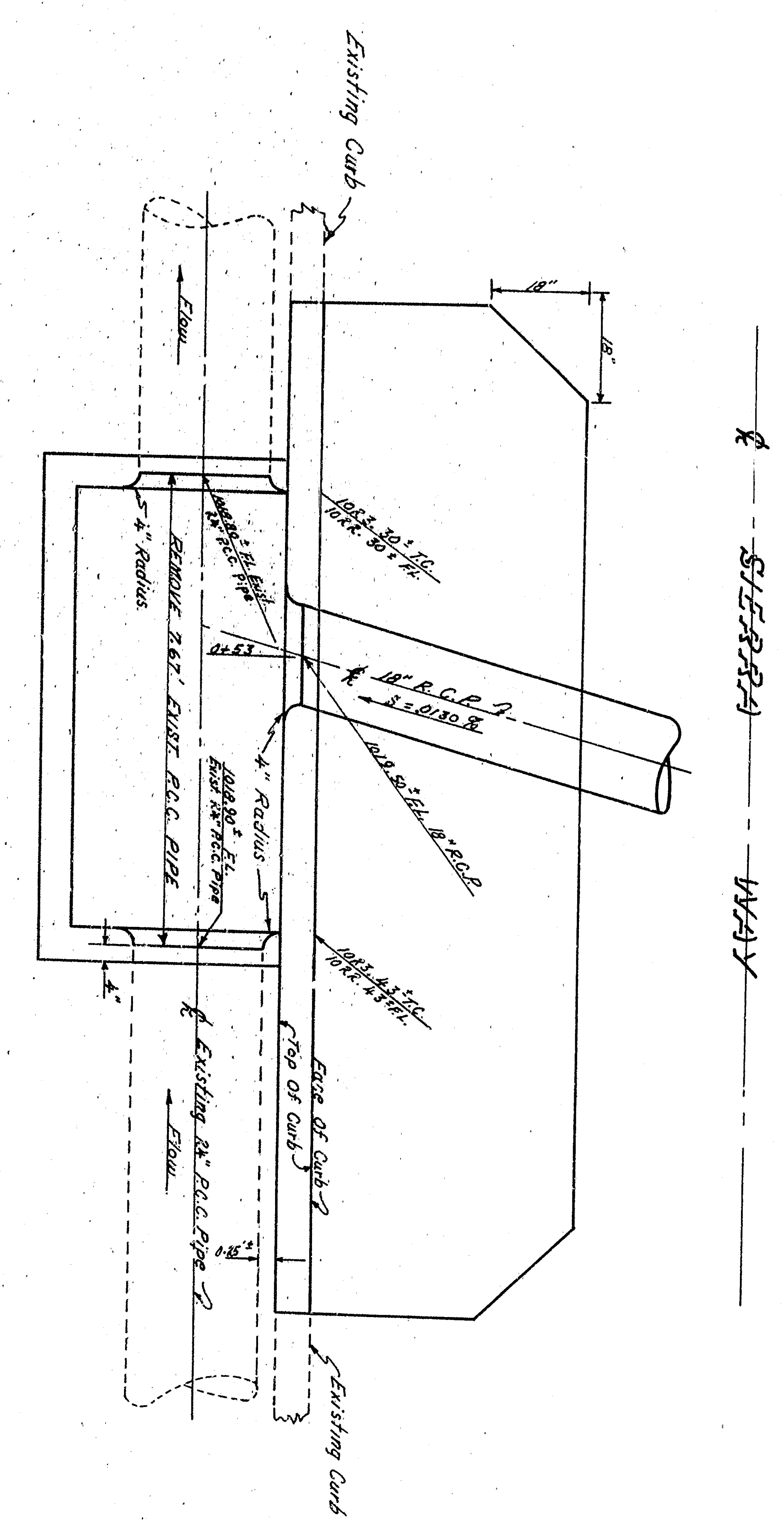
BENCH MARK:
 Screen In N.W. Corner Fourth Street
 And Sierra Way, Elev. 1023.57 M.S.L.

NOTE:
 The contractor's operation shall be so regulated as not to interfere with the operations of trains, or cause damage to railway facilities. No excavated or other material, tools, or equipment to be placed within eight feet (8') of the outside rail of the tracks.
 Twenty-four hours advance notice of the installation to be given in order that the representative of the S.P. Co. may be present at the time of the installation. Please call Contract Section Madison 4-6161, Ext. 22531.

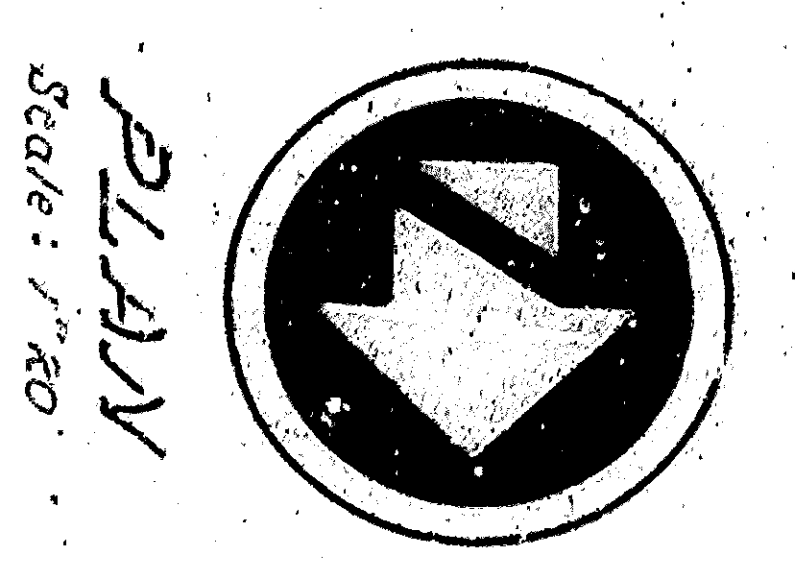
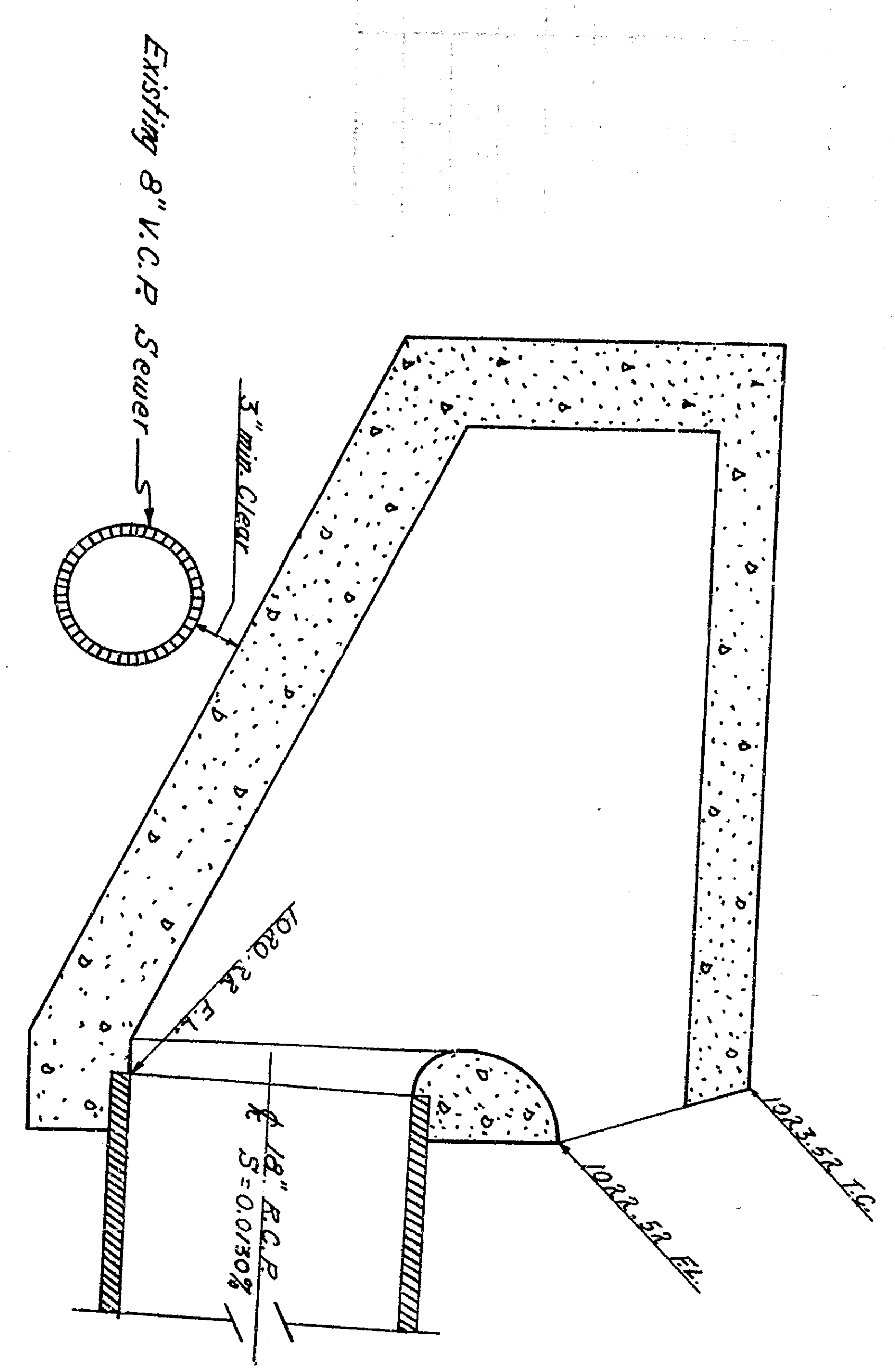
PROFILE
 Scale: Horiz. 1" = 20'
 Vert. 1" = 2'

GENERAL NOTES

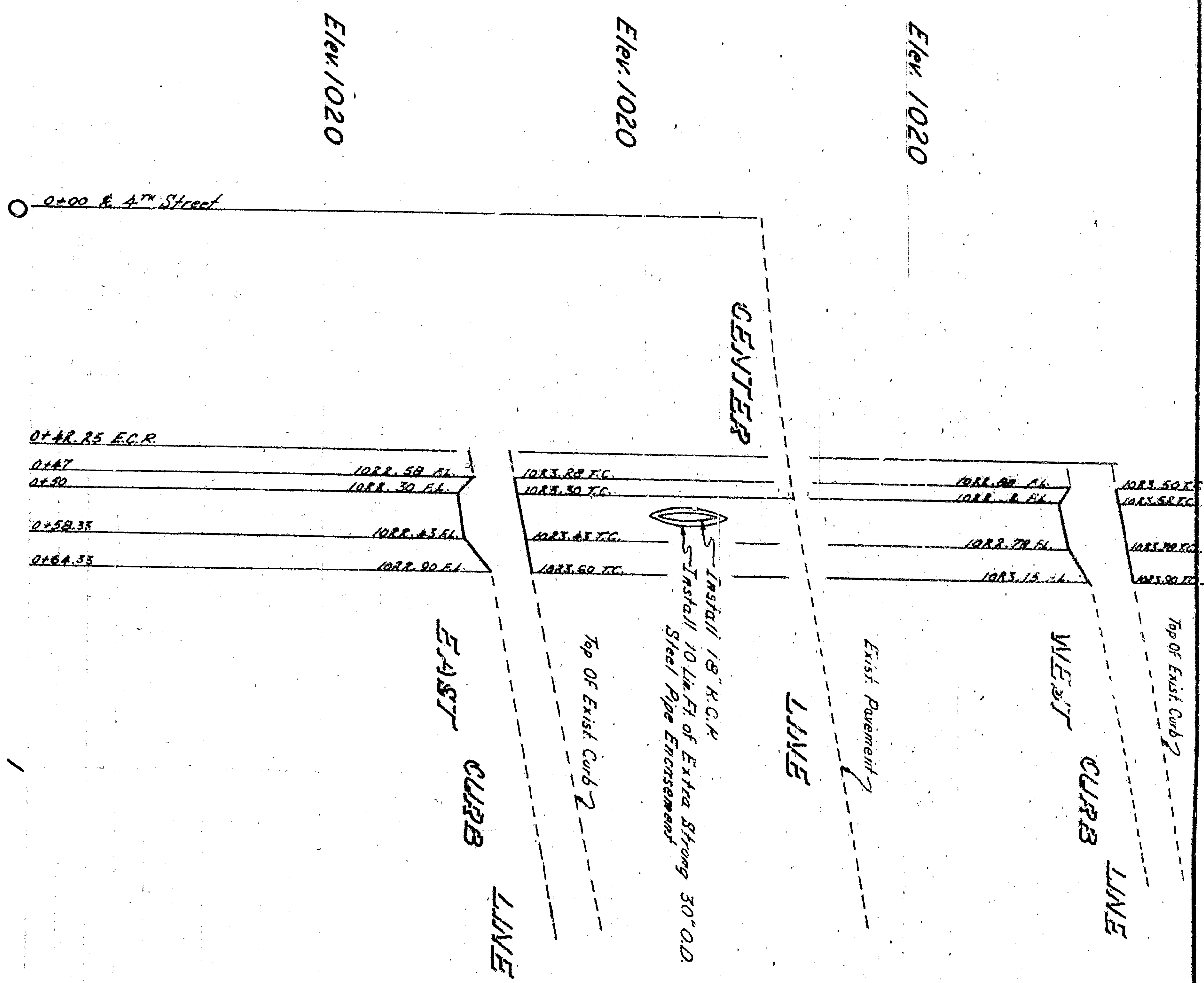
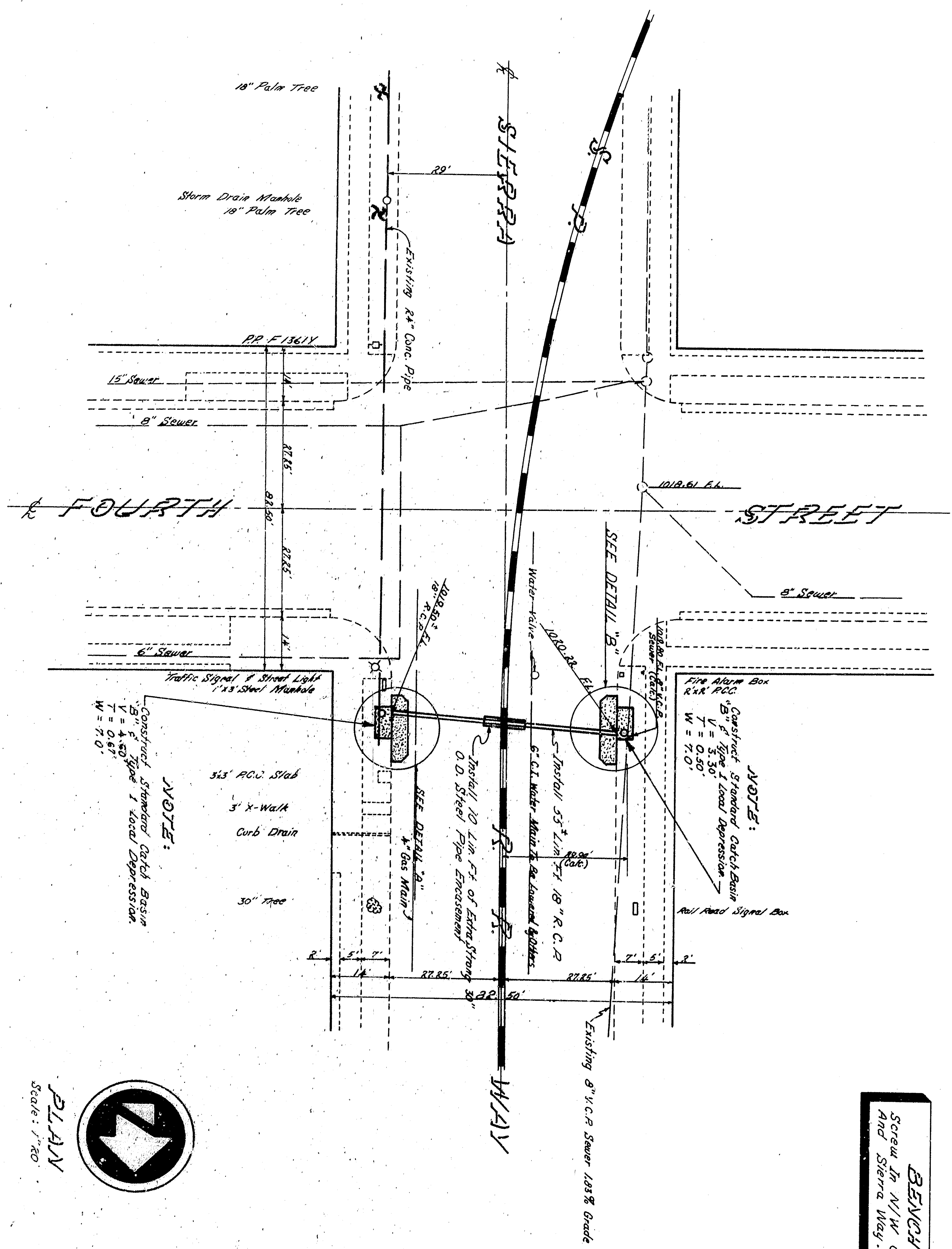
1. All work performed on this plan shall be done in conformity with applicable provisions of Standard Specifications, State of California, Highway Transportation Department, and special provisions in S&S21 (Highways), Dated July 1955, and special provisions in S&S21 (Highways), Dated of February.
2. Adjust all Sewer Manholes to grade after completion of paving.
3. Obstructions (markings on plan) as directed by Engineer to be removed or relocated under his contract.
4. To be removed or relocated by others.



DETAIL "B"
 Scale: 1" = 1'



| | | |
|---|----------------|--------|
| APPROVED: | DATE: | 1964 |
| CITY ENGINEER | | |
| REGISTERED CIVIL ENGINEER NO. 12643 | | |
| DRAWING NO. | DRAWN BY | KH/ML |
| 3321 | CHECKED BY | 2/2/72 |
| SHEET 1 OF 4 | RECOMMENDED BY | |
| DEPARTMENT OF ENGINEERING CITY OF SAN BERNARDINO | | |
| IMPROVEMENT PLANS | | |
| SIERRA WAY AT FOURTH STREET | | |



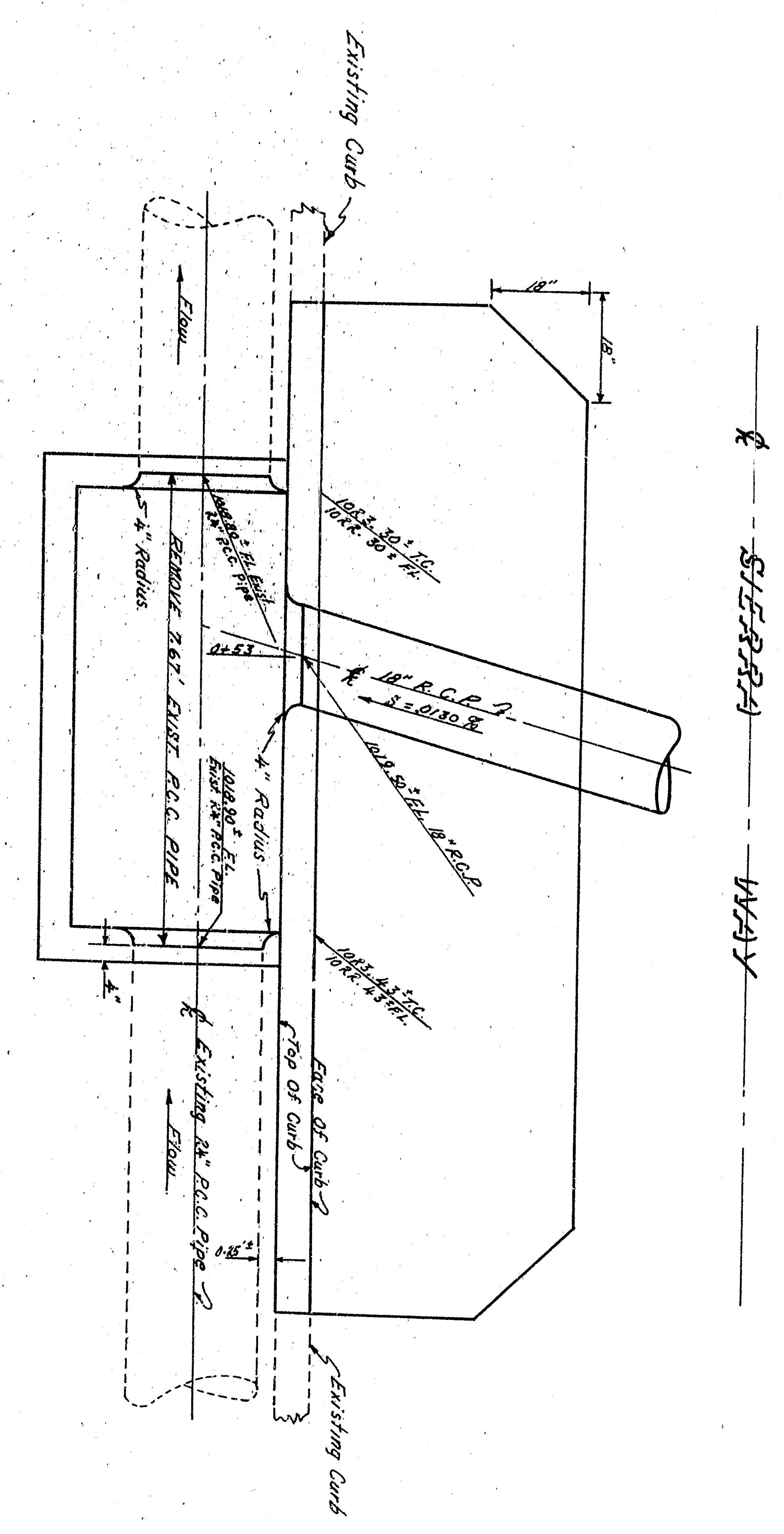
BENCH MARK:
 Screen In N.W. Corner Fourth Street
 And Sierra Way, Elev. 1023.57 M.S.L.

NOTE:
 The contractor's operation shall be so regulated as not to interfere with the operations of trains, or cause damage to railway facilities. No excavated or other material, tools, or equipment to be placed within eight feet (8') of the outside rail of the tracks.
 Twenty-four hours advance notice of the installation to be given in order that the representative of the S.P. Co. may be present at the time of the installation. Please call Contract Section Madison 4-6161, Ext. 22531.

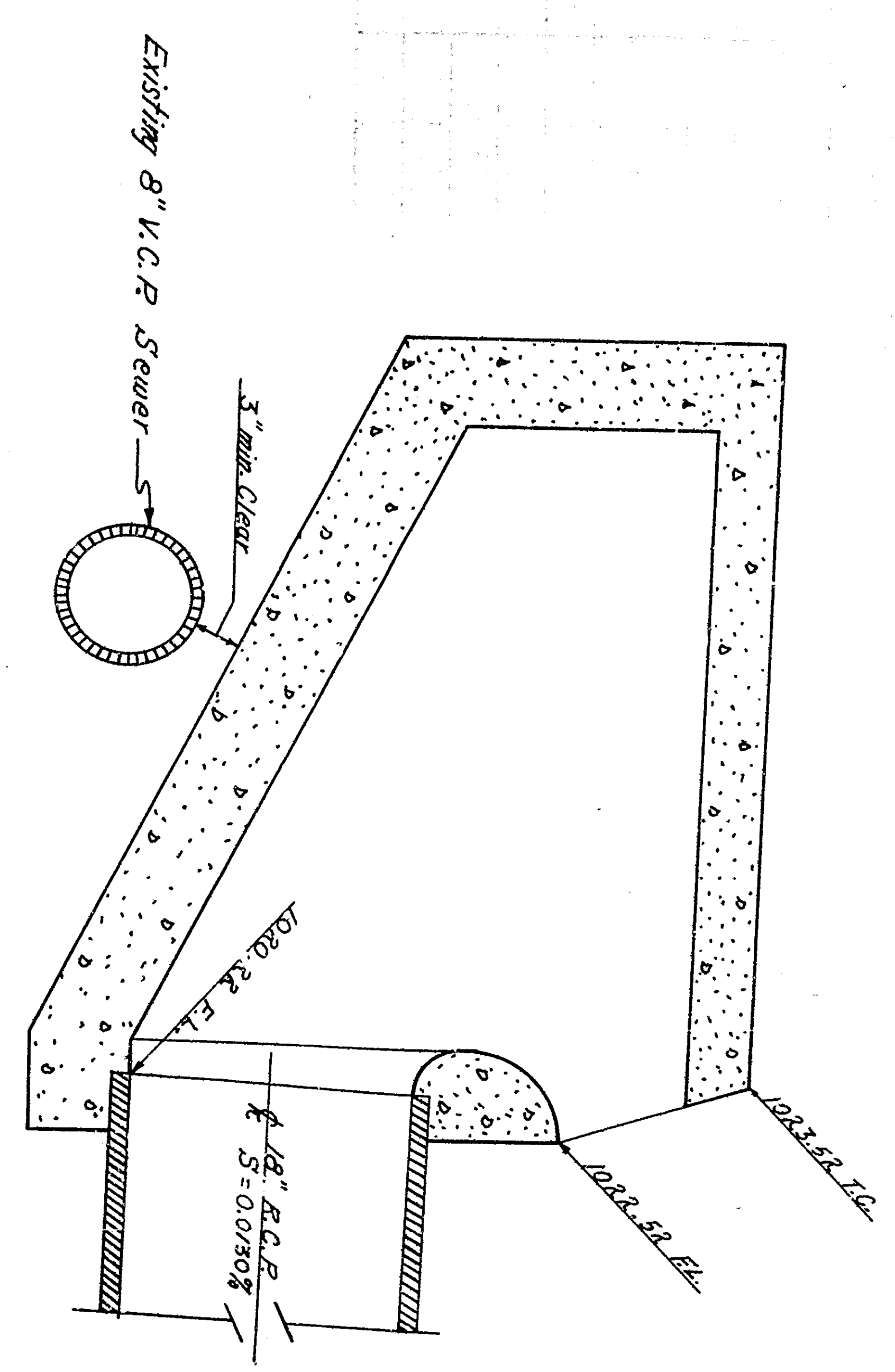
PROFILE
 Scale: Horiz. 1" = 20'
 Vert. 1" = 2'

GENERAL NOTES

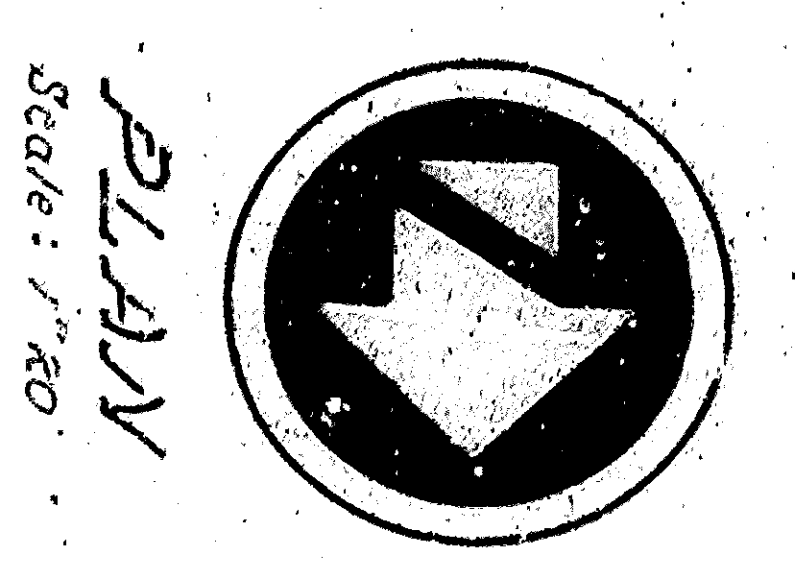
1. All work performed on this plan shall be done in conformity with applicable provisions of Standard Specifications, State of California, Highway Transportation Department, and special provisions in S&S219 (Highways), Dated July 1965, and special provisions in S&S219 (Highways), Dated August 1965.
2. Adjust all Sewer Manholes to grade after completion of paving.
3. Obstructions (markings on plan) as directed by Engineer to be removed or relocated under his contract.
4. To be removed or relocated by others.



DETAIL "A"
 No Scale



DETAIL "B"
 Scale: 1" = 1'



| | | |
|---|----------------|--------|
| APPROVED: | DATE: | 1964 |
| CITY ENGINEER | | |
| REGISTERED CIVIL ENGINEER NO. 12643 | | |
| DRAWING NO. | DRAWN BY | KH/ML |
| 3321 | CHECKED BY | 2/2/72 |
| SHEET 1 OF 4 | RECOMMENDED BY | |
| DEPARTMENT OF ENGINEERING CITY OF SAN BERNARDINO | | |
| IMPROVEMENT PLANS | | |
| SIERRA WAY AT FOURTH STREET | | |